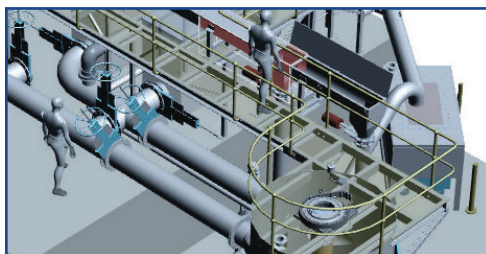


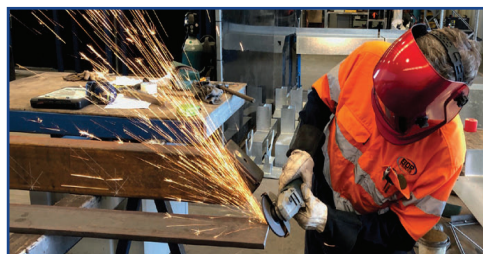


OUR CAPABILITIES



ENGINEERING / DESIGN

- 3D Design and Modelling
- 3D Laser Scanning
- Shop Detailing
- Mechanical Engineering
- Process Engineering
- HAZOP / CHAZOP / SID
- Structural Engineering
- RPEQ Certification
- Feasibility Studies
- Scope Development
- Reverse Engineering
- Engineering Management
- Project Management



FABRICATION / WORKSHOP

- Structural Steel
- Access Systems
- CNC Brake Press, Guillotine
- Weld Positioners / Rollers
- Welding Machines, incl. Orbital
- Pressure Piping and Vessels
- Tanks, Chutes, Hoppers
- Hygienic Process Pipework
- Carbon Steel, Stainless
- Aluminium and Exotics
- NDT and Pressure Testing
- Full QA / QC / OH&S Process
- Factory Acceptance Test



FABRICATION / INSTALLATION ON-SITE

- Water Infrastructure Installations
- Food & Beverage Installations
- On-site Fabrication & Installation
- Carbon Steel, Stainless
- Aluminium and Others
- Plant Shutdown Specialists
- Relocation & Decommissioning
- 3D Laser Scanning
- Fully Mobile Work Teams
- Full QA / QC / OH&S Process
- On-site Measure and Drafting
- On-site Commissioning
- Site Acceptance Test



MAINTENANCE / SERVICES ON-SITE

- Emergency Services / Repairs
- Mechanical Breakdowns
- Mechanical Fitters
- Fabrication
- Planned Maintenance (PM's)
- RPZ Testing
- Fluid Clean Ups
- Pressure Cleaning
- Repairs to Valves and Pipes
- Line Marking
- Painting (Small Jobs)
- Full QA / QC / OH&S Process
- Project Management

CONTACT US

OFFICE: ☎ 07 3393 6441 ✉ enquiry@bdrstainless.com.au © 34 Millennium Place, Tingalpa QLD 4173 POSTAL: PO Box 2219, Wellington Point QLD 4160